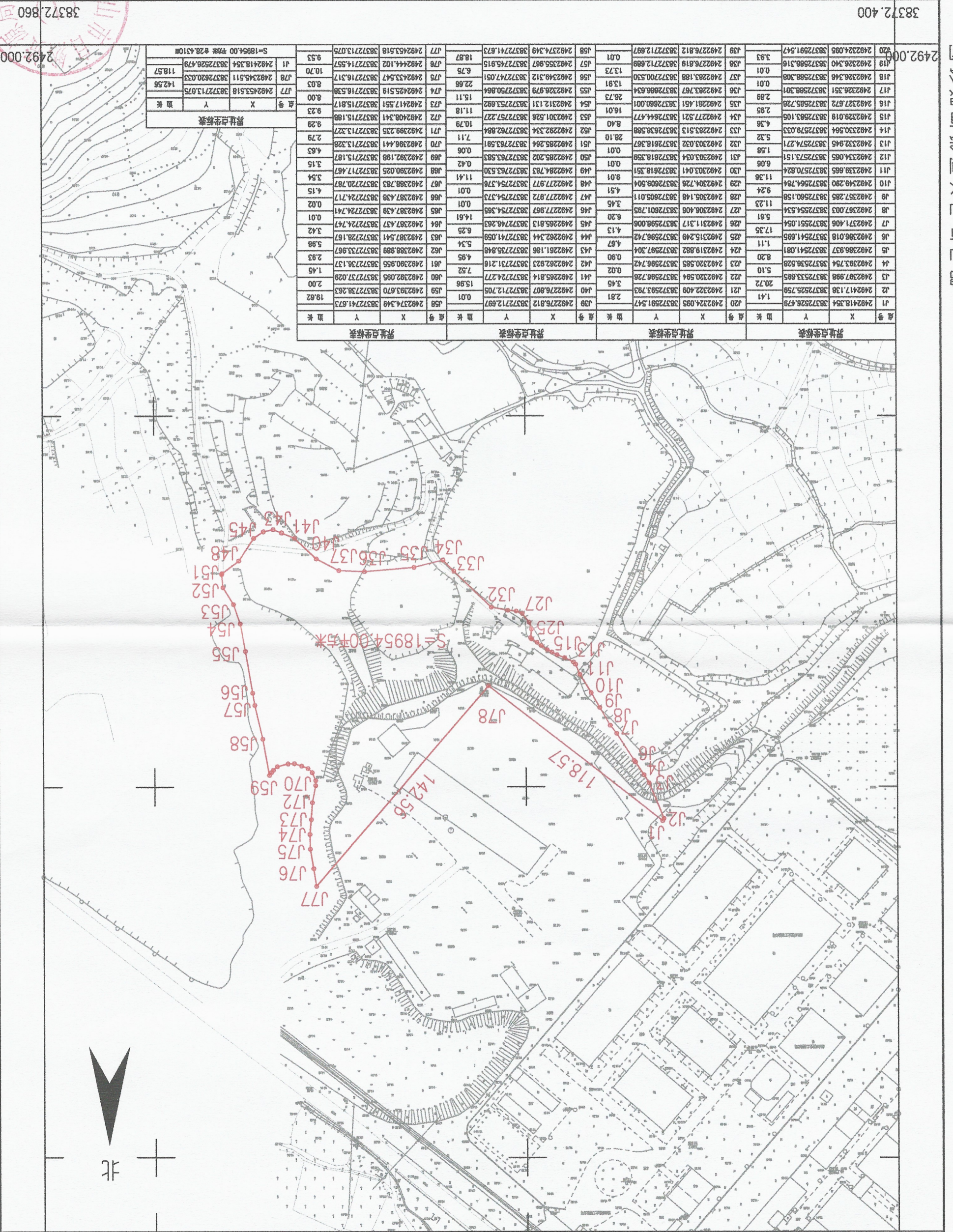


鹤山市2019年度第十九批次城镇建设用地图测定界图(ZS373)

鹤山市址山镇新蓬村委会

单位: m.m<sup>2</sup>

38372.400 2492.640 38372.860 2492.640



界址点坐标表		界址点坐标表		界址点坐标表		界址点坐标表	
点号	坐标	点号	坐标	点号	坐标	点号	坐标
J1	2492418.354	J38	2492276.812	J75	2492453.518	J112	2492339.665
J2	2492417.138	J39	2492277.289	J76	2492444.102	J113	2492332.945
J3	2492397.988	J40	2492281.451	J77	2492435.511	J114	2492330.824
J4	2492393.794	J41	2492282.304			J115	2492329.018
J5	2492386.937	J42	2492282.923			J116	2492327.672
J6	2492386.018	J43	2492281.866			J117	2492326.346
J7	2492371.054	J44	2492277.977			J118	2492324.095
J8	2492367.003	J45	2492274.173			J119	2492322.530
J9	2492357.285	J46	2492268.513			J120	2492320.530
J10	2492349.280	J47	2492262.344			J121	2492319.882
J11	2492339.665	J48	2492255.813			J122	2492320.594
J12	2492330.824	J49	2492248.283			J123	2492323.767
J13	2492329.018	J50	2492241.059			J124	2492326.812
J14	2492329.018	J51	2492234.783			J125	2492327.289
J15	2492327.672	J52	2492227.977			J126	2492328.376
J16	2492326.346	J53	2492221.866			J127	2492329.301
J17	2492324.095	J54	2492215.518			J128	2492329.301
J18	2492322.530	J55	2492208.518			J129	2492328.376
J19	2492320.530	J56	2492202.304			J130	2492327.672
J20	2492319.882	J57	2492195.813			J131	2492326.346
J21	2492319.882	J58	2492188.518			J132	2492324.095
J22	2492319.882	J59	2492181.451			J133	2492322.530
J23	2492319.882	J60	2492174.173			J134	2492320.530
J24	2492319.882	J61	2492167.001			J135	2492319.882
J25	2492319.882	J62	2492160.001			J136	2492318.539
J26	2492319.882	J63	2492153.530			J137	2492317.289
J27	2492319.882	J64	2492147.001			J138	2492316.001
J28	2492319.882	J65	2492140.501			J139	2492314.751
J29	2492319.882	J66	2492134.001			J140	2492313.501
J30	2492319.882	J67	2492127.501			J141	2492312.251
J31	2492319.882	J68	2492121.001			J142	2492311.001
J32	2492319.882	J69	2492114.501			J143	2492309.751
J33	2492319.882	J70	2492108.001			J144	2492308.501
J34	2492319.882	J71	2492101.501			J145	2492307.251
J35	2492319.882	J72	2492095.001			J146	2492306.001
J36	2492319.882	J73	2492088.501			J147	2492304.751
J37	2492319.882	J74	2492082.001			J148	2492303.501
J38	2492319.882	J75	2492075.501			J149	2492302.251
J39	2492319.882	J76	2492069.001			J150	2492301.001
J40	2492319.882	J77	2492062.501			J151	2492299.751
J41	2492319.882					J152	2492298.501
J42	2492319.882					J153	2492297.251
J43	2492319.882					J154	2492296.001
J44	2492319.882					J155	2492294.751
J45	2492319.882					J156	2492293.501
J46	2492319.882					J157	2492292.251
J47	2492319.882					J158	2492291.001
J48	2492319.882					J159	2492289.751
J49	2492319.882					J160	2492288.501
J50	2492319.882					J161	2492287.251
J51	2492319.882					J162	2492286.001
J52	2492319.882					J163	2492284.751
J53	2492319.882					J164	2492283.501
J54	2492319.882					J165	2492282.251
J55	2492319.882					J166	2492281.001
J56	2492319.882					J167	2492279.751
J57	2492319.882					J168	2492278.501
J58	2492319.882					J169	2492277.251
J59	2492319.882					J170	2492276.001
J60	2492319.882					J171	2492274.751
J61	2492319.882					J172	2492273.501
J62	2492319.882					J173	2492272.251
J63	2492319.882					J174	2492271.001
J64	2492319.882					J175	2492269.751
J65	2492319.882					J176	2492268.501
J66	2492319.882					J177	2492267.251
J67	2492319.882					J178	2492266.001
J68	2492319.882					J179	2492264.751
J69	2492319.882					J180	2492263.501
J70	2492319.882					J181	2492262.251
J71	2492319.882					J182	2492261.001
J72	2492319.882					J183	2492259.751
J73	2492319.882					J184	2492258.501
J74	2492319.882					J185	2492257.251
J75	2492319.882					J186	2492256.001
J76	2492319.882					J187	2492254.751
J77	2492319.882					J188	2492253.501
J78	2492319.882					J189	2492252.251
J79	2492319.882					J190	2492251.001
J80	2492319.882					J191	2492249.751
J81	2492319.882					J192	2492248.501
J82	2492319.882					J193	2492247.251
J83	2492319.882					J194	2492246.001
J84	2492319.882					J195	2492244.751
J85	2492319.882					J196	2492243.501
J86	2492319.882					J197	2492242.251
J87	2492319.882					J198	2492241.001
J88	2492319.882					J199	2492239.751
J89	2492319.882					J200	2492238.501

鹤山市大地测绘有限公司  
2000国家大地坐标系:中央子午线114度  
1985国家高程基准:高程为1米  
2007年测式 4430313



1:2000

38372.860

2492.000

38372.400

2492.000

鹤山市大地测绘有限公司